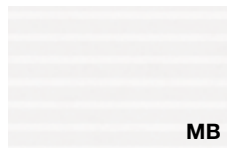


# Finiture | Finishes | Finitions | Acabados

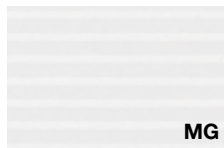
## MEL

### Melaminico

Melamine | Mélaminé | Melaminico



**Bianco rigato**  
Rippled effect white  
Blanc avec rayures en sérigraphie  
Blanco rayado



**Grigio rigato**  
Rippled effect grey  
Gris avec rayures en sérigraphie  
Gris rayado



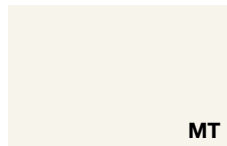
**Nichel**  
Nickel  
Nickel  
Níquel



**Cacao**  
Cocoa  
Cacao  
Cacao



**Bianco**  
White  
Blanc  
Blanco



**Talco**  
Talco  
Talco  
Talco



**Ocra**  
Ochre  
Ocre  
Ocre



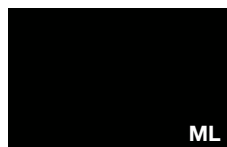
**Safari**  
Safari  
Safari  
Safari



**Noisette**  
Noisette  
Noisette  
Noisette



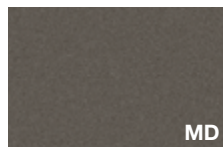
**Verde**  
Green  
Vert  
Verde



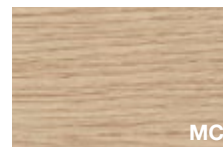
**Nero**  
Black  
Noir  
Negro



**Blu notte**  
Night blue  
Bleu nuit  
Azul noche



**Ardesia**  
Ardesia  
Ardesia  
Pizarra



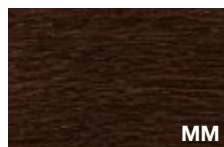
**Rovere chiaro**  
Light oak  
Chêne clair  
Roble claro



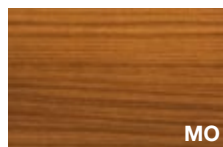
**Rovere americano**  
American oak  
Chêne américain  
Roble americano



**Rovere grigio**  
Grey oak  
Chêne gris  
Roble gris



**Rovere moro**  
Dark oak  
Chêne foncé  
Roble oscuro



**Noce Canaletto**  
Canaletto Walnut  
Noyer Canaletto  
Nogal Canaletto



**Noce scuro**  
Dark walnut  
Noyer foncé  
Nogal oscuro

Dedalo

## Varianti

Finish options | Variantes | Opciones de acabado

**COSC Colore scocca**  
Body colour  
Couleur structure  
Acabado de cuerpo

## GOF

### Goffrato

Embossed | Gaufré | Gofrado



**Bianco**  
White  
Blanc  
Blanco



**Argento**  
Silver  
Argent  
Plata



**Grigio scuro**  
Dark grey  
Gris foncé  
Gris oscuro



**Noisette**  
Noisette  
Noisette  
Noisette



**Ardesia**  
Ardesia  
Ardesia  
Pizarra



**Moka**  
Mocha  
Moka  
Café



**Nero**  
Black  
Noir  
Negro



**Arancione**  
Orange  
Orange  
Naranja



**Rosso "F"**  
Red "F"  
Rouge "F"  
Rojo "F"



**Rubino**  
Ruby  
Rubis  
Rubi



**Indaco**  
Indigo  
Indigo  
Azul Indigo



**Azzurro**  
Blue  
Bleu  
Azul



**Verde**  
Green  
Vert  
Verde



**Cedro**  
Lime green  
Vert Cédrot  
Verde Cedro

## Varianti

Finish options | Variantes | Opciones de acabado

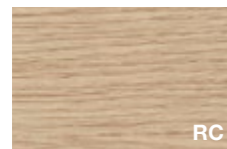
### COFR Colore fronte

Front colour  
Couleur façade  
Acabado de frente

## LGN

### Legno

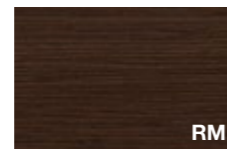
Wood | Bois | Madera



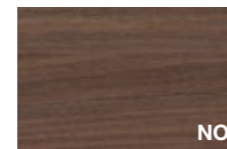
**Rovere chiaro**  
Light oak  
Chêne clair  
Roble claro



**Rovere grigio fumo**  
Smoke grey oak  
Chêne gris de fumée  
Roble gris humo



**Rovere moro**  
Dark oak  
Chêne foncé  
Roble oscuro



**Noce Canaletto**  
Canaletto walnut  
Noyer Canaletto  
Nogal Canaletto



**Ebanò silver**  
Silver ebony  
Ebony silver  
Ebano plata



**Ebanò Makassar**  
Makassar ebony  
Ebony Makassar  
Ebano Makassar



**Noce termocotto**  
Heat-treated walnut  
Noyer thermo traité  
Nogal termotratado

## Varianti

Finish options | Variantes | Opciones de acabado

### COSC Colore scocca

Body colour  
Couleur structure  
Acabado de cuerpo

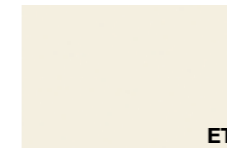
## EPX

### Epossidico

Epoxy | Époxy | Epoxi



**Bianco**  
White  
Blanc  
Blanco



**Talco**  
Talco  
Talco  
Talco



**Grigio**  
Grey  
Gris  
Gris



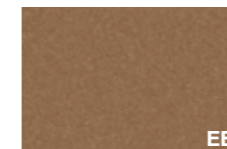
**Beige Arizona**  
Arizona beige  
Beige Arizona  
Beige Arizona



**Noisette**  
Noisette  
Noisette  
Noisette



**Safari**  
Safari  
Safari  
Safari



**Rame**  
Copper  
Cuivre  
Cobre



**Rosso Jaipur**  
Jaipur red  
Rouge Jaipur  
Rojo Jaipur



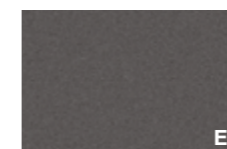
**Bronzo**  
Bronze  
Bronze  
Bronze



**Blu notte**  
Night blue  
Bleu nuit  
Azul noche



**Grigio Bromo**  
Bromo grey  
Gris Bromo  
Gris Bromo



**Ardesia**  
Ardesia  
Ardesia  
Pizarra



**Verde Comodoro**  
Comodoro green  
Vert Comodoro  
Verde Comodoro



**Nero**  
Black  
Noir  
Negro

Dedalo

Dedalo

## Varianti

Finish options | Variantes | Opciones de acabado

### COFR Colore fronte

Front colour  
Couleur façade  
Acabado de frente